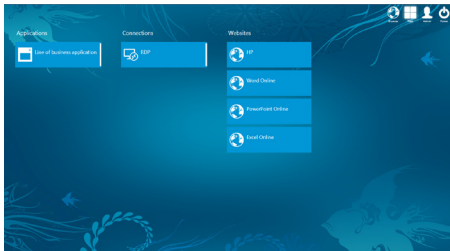


HP Easy Shell Technology Spotlight



Refine the end-user experience on HP Thin Clients



HP Easy Shell

The user interface is easy to navigate for both administrators and users. Enjoy simultaneous support for VDI connections and cloud infrastructure, web browsers and single-purpose applications.

HP Thin Clients are the ideal end-point devices in cloud and Virtual Device Infrastructure (VDI) environments. They come in a variety of form factors, with your choice of performance levels and operating systems—plus, they're incredibly secure as no data is permanently stored on the unit itself. Because HP Thin Clients are typically end points, they meet very targeted and specific end-user requirements. Some users need a dedicated browser-focused client, others require a device that launches their remote desktop, while others are dedicated to a single-use line-of-business application. HP Easy Shell is designed to radically improve the end-user experience for HP Thin Clients running Windows Embedded operating systems in all of these scenarios.¹

The desktop is the user experience

Many people talk about the end-user experience, yet often times they only consider and discuss the hardware and infrastructure performance. The truth is the desktop is the primary user experience. What the user sees and experiences when they log in to a computer or thin client determines their first impression and initial satisfaction with the solution.

Another key factor that defines the user experience is the hardware form factor. Noticeably, the user experience with a desktop thin client differs from that of a mobile or tablet user experience. HP Thin Clients are available in all three form factors, and HP Easy Shell has uniquely targeted features for different form factors. For example, HP Easy Shell helps ensure the user has access to all appropriate and required tablet features, including touch and virtual keyboard support, plus a mechanism to quickly and easily enable application switching.

Focus the experience

HP Easy Shell allows an organization to quickly and easily define and customize their users' experiences based on their unique needs. Users can be given access to multiple applications within HP Easy Shell, or be limited to a single application—running as a kiosk. HP Easy Shell also supports many different experiences including a web browser, an application or a VDI connection. A particular user may require the use of one application, or several, and HP Easy Shell makes this type of user customization easy.

Control the experience

HP Easy Shell has the added advantage of allowing for, defining and restricting the user experience, which makes the entire user experience completely controlled by the organization.

HP Easy Shell provides the following security and control features:

- Display Applications – Easily defined access to particular applications or system settings
- Auto-launch – A particular application is automatically launched upon user login
- Exit Action – Defines the thin client behavior when a particular application is closed. The actions are to reboot, logoff, or shutdown the thin client.
- Persistence – Preserves and re-launches the application, even if the user attempts to close

HP also provides additional software available for HP Thin Clients running a Windows Embedded operating system:

- HP Hotkey Filter² - Redirects the Ctrl+Alt+Del and Win+L keystrokes to the remote VDI session
- HP USB Port Manager² – Restricts access to USB drives

Speed the deployment

Quick, easy configuration and deployment of HP Easy Shell is one of its biggest advantages. Organizations with only a handful of devices can quickly and easily set up each individual device. Or, a single configuration can be defined, exported, and then easily applied to other devices. Organizations with massive install bases can easily define groups of experiences with users or domains. Once defined, the settings can be exported and automatically applied quickly and easily using HP Device Manager or Microsoft SCCM.

Getting started

HP Easy Shell provides a simple, quick, secure and focused end-user desktop experience for users of HP Thin Clients. Here's the setup procedures:

1. Visit the [HP Support site](#) and select HP Thin Client platforms with Windows Embedded OS to obtain the latest version of HP Easy Shell
2. Install on HP Thin Clients
3. Customize the user experience
4. Export the settings file and deploy using HP Device Manager or Microsoft SCCM when deploying onto multiple devices

HP Thin Client support

HP Easy Shell provides a simple, quick, secure and focused end-user desktop experience for HP Thin Clients running Windows Embedded Standard 7E, Windows Embedded Standard 7P, Windows Embedded 8 Standard, and Windows Embedded 8.1 Industry Pro operating systems.

Additional product guides

- [HP Easy Shell datasheet](#)
- [HP Easy Shell technical whitepaper](#)

For more information visit
hp.com/go/EasyShell

¹ HP Easy Shell is currently available on Windows Embedded Standard 7E, Windows Embedded Standard 7P, Windows Embedded 8 Standard, and Windows Embedded 8.1 Industry Pro

² Requires installation and download from hp.com

Sign up for updates
hp.com/go/getupdated



Share with colleagues



Rate this document

